

CHARACTERISTICS

- Designed and manufactured specifically for the corrugated board industry using our latest Lap Feeder system with Servo Driver and Vacuum Suction Belt
- High precision die—cutting from Micro Flute to Double wall corrugated board
- 100% Stripping can be achieved by using our latest Stripping system and Grip Edge Waste Removal system for both small and large formations
- Air Brake system and Power Cut-Off Emergency Stop system ensure the machine is safe and reliable

- All operations can be operated via the control panels or exchange die—cutting tools on the exterior of the machine
- With the new delivery section, multi-out formations can run smoothly

ASAHI Machinery (Since 1917) and NANTAI Precise Machinery (since 1981) formed a cooperation in 2004 to produce and develop Flatbed Die—Cutting machines and inline equipment in China using Japanese technology. All the production processing, assembling and quality control is supervised by ASAHI machinery using their Japanese systems for control.



AP-165 EII LAP FEEDER - 5500 PH
Automatic Flatbed Die-Cutting Machine



Feeding section

Our latest Servo Drive and Vacuum Suction Belt system (lead edge feeding type) ensure each only one sheet is registered perfectly and smoothly at the gripper bar front lay each time

The smooth action of the feeder eliminates damages to the cardboard's surface and caliper whilst maintaining its accuracy

Variable vacuum and special designed paper levelling system helps position the warped material over the front battle during feeding phase



Press section

A unique Eccentric Gear Shaft drive transmission is equipped with both forced and splash lubrication system to maintain stability during the cutting process

The unique Eccentric Gear Shaft is manufactured by OSAKA, Japan using a high quality alloy steel! Which is processed and treated to enhance its durability and performance at high speed

All of our flatbed die-cutting machine use a special imported Cam Box Indexing Unit to ensure accurate transmission of the gripper bars

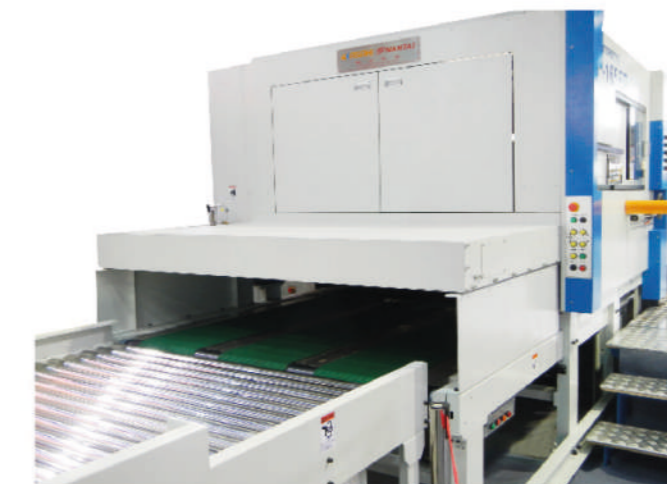
Spike type gripper bars are used to help all materials, including warped material and heavy-duty cardboard, during transmission



Stripping section

All the stripping tools are inserted from outside the machine and our quick lock centerline system helps reduce the set-up time

The Male die is locked into position using a fastlock hand wheel system, and the Female die is locked into position using a fast lock crank handle. All the controls can be used from outside the machine on the operator side



Delivery section

Side Guides and Front Fence alignment are used to control the accuracy of the stack in the delivery section

The side guides and the back fence can be adjusted from the operator side of the machine during production to achieve perfect bundles

Both side guides are independently positioned by a motor for ease of use

Servo drive Unloading is used to hold the "next batch" temporarily whilst the delivery table lowers to dispatch the completed bundle



Semi-Auto-Pre-Feeder (Optional)

Maximum stack height 2300 mm

Aniline Pile Turner is used to rotate the sheets depending upon the desired print orientation (Top surface printing or bottom surface printing)
Additional joggers are installed at the end of the conveyor to control the position of the sheets in the feeder hopper

This pre-feeder is a fixed type unit that is connected to the floor with an extendable conveyor that reaches into the feeder of the flatbed die cutting machine according to the sheet length



Chase Loader

The Chase Loader is used to reduce the set-up time of the machine by having a second chase that can be pre-set with the next order

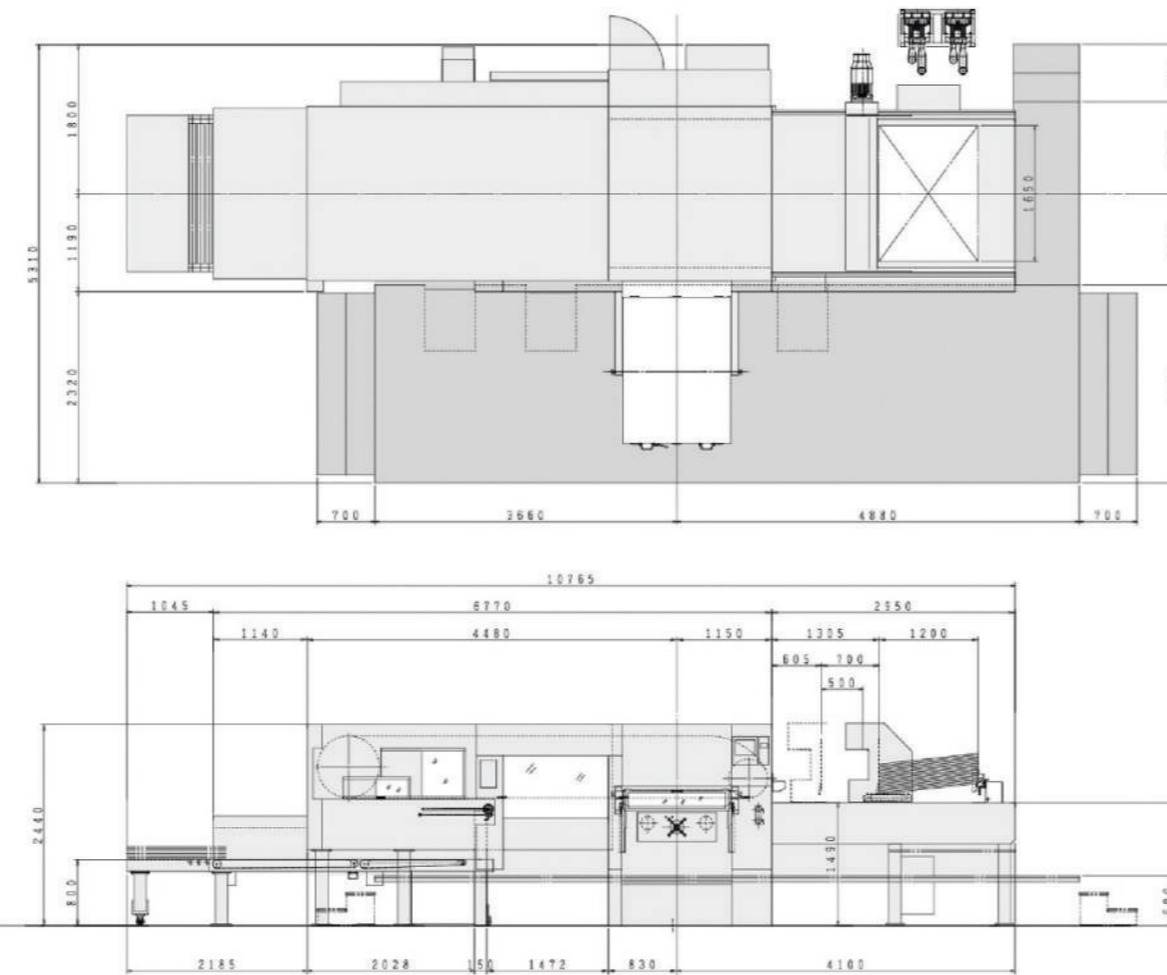
The chase frames can be changed efficiently and with ease using the chase loader



Turn Table and Breaker Option

Adaptable unit used to automatically separate the blanks in bundle format after the die cutting process
4 piles can be separated in one process using our high pressure hydraulic system

OUTLINE



TECHNICAL DATA

Maximum sheet size	1200x1650mm
Minimum sheet size	500x600mm
Maximum cutting size	1180x1630mm
Gripper size	10
Maximum operational pressure	350tons
Applicable thickness of corrugated board	1-9mm
Maximum speed	5500i.p.h
Required power supply	43KW
Net weight of machine	39tons

The specification is subject to alteration without notice



CARTONMASTER
Automatic Flatbed Die-Cutting Machine



AP-165 EII LAP FEEDER - 5500 PH
Automatic Flatbed Die-Cutting Machine